



# Connected Store Analysis and Reporting

Independent and regional chain package for ISS45 and ScanMaster

*StoreNext's new Connected Services portfolio now offers multiple connected modules for a single \$25 subscription*

StoreNext's Connected Store Analysis and Reporting package answers the needs of independent grocers and small chains by providing a set of powerful modules within a single application.

The package includes:

- Connected Report Viewer – see your store reports anytime, from anywhere. Want reports from last week? Last month? Last year? They're all there.
- Connected Electronic Journal – centralized data storage for your store, but now works across multiple time periods and multiple stores. Even outputs to Excel® for standard data handling.
- Connected Reporting System – an entire suite of powerful reports, analysis and drill-down capabilities using multiple years of data across all your stores.

- Connected Sales Analysis – works as an extension to Connected Reporting and takes that information all the way down to item level (ISS45 only). Sales Analysis not only extends the existing reporting system reports, but also adds new features, including additional reports, query-handling, and superb inter-working with RBO and true costing.

And, as with all applications in our StoreNext Connected Services portfolio, there is no up-front capital or license costs, no maintenance or upgrade charges, instant ROI and anytime/anywhere consolidation across any and all of your stores.

The powerful combination of these features is unbeatable – at any price. But the fact that they're all available for a single, low-cost subscription makes this a must-have for grocers and store groups of any size.



StoreNext Retail Technologies LLC  
1821 Walden Office Square  
Suite 220  
Schaumburg, IL 60173  
800.340.4425  
www.StoreNext.com

© 2004 StoreNext. All rights reserved. The StoreNext logo is a trademark of Retailix, Inc. All other trademarks or registered trademarks are the property of their respective owners.

# StoreNext Report Viewer

Anytime, anywhere access to your key store reports

*StoreNext ConnectedServices™ cutting-edge technology helps you manage your operation while driving down your costs.*

Whether you are operating StoreNext's ISS45 system or currently operating ScanMaster, the StoreNext Report Viewer gives you the key tool you need to remove the time and place limits from store management.

With Connected Services' Report Viewer, your important store reports are no longer chained to your supermarket back room.

You and your authorized personnel have the convenience and freedom to see your reports anytime you need. Whether from home, while traveling to another office or another store, all you need is an Internet connection.

Connected Services uploads your ASCII/Excel/Crystal Reports as they are created at end-of-day and stores them for a minimum of 13 months – and more if you need it.

So comparing to the same day last week, last month or last year is just a point-and-click.

Support for Report Viewer is in both ISS45 V7 and V8 as well as ScanMaster.

#	Group	1	Net Sales	Count	% OS	Discount	Count	Net of Discount	Returns	Count	Cancel
1	GROCERY		22297.24	10379	21.39	0.00	0	22297.24	25.71	-9	Submit
2	BAK/DR		2194.75	849	3.11	0.00	0	2194.75	4.39	-2	Submit
3	PRODUCE		3989.04	1439	3.82	0.00	0	3989.04	0.00	0	Submit
4	DAIRY		8851.00	3236	8.37	0.00	0	8851.00	8.49	-3	Submit
5	MEAT/SEA		921.39	299	0.87	0.00	0	921.39	1.03	-1	Submit
6	TOBACCO		2176.43	319	2.06	0.00	0	2176.43	0.00	0	Submit
7	BEER		2871.34	486	2.75	0.00	0	2871.34	0.00	0	Submit
7	BEER		2871.34	486	2.75	0.00	0	2871.34	0.00	0	Submit

# StoreNext Electronic Journal

Turn ISS45's super EJ loose across stores and dates

*StoreNext ConnectedServices™ cutting-edge technology helps you manage your operation while driving down your costs.*

ISS45's superb electronic journal has been a standard feature since its initial release. But only now has StoreNext's Connected Services unleashed its full power.

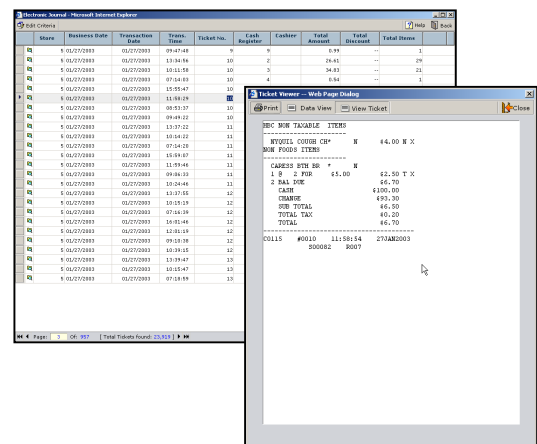
StoreNext Connected Services automatically collects your stores' ISS45 Transaction Log data and consolidates it into a specially constructed database built for fast data access and analysis.

- Do you want to know right away if your new policy on voids is working in those three stores out in the suburbs? Just click which stores to include – it's as easy as using the standard EJ in the store
- Need to answer the age-old question about how the full moon

affects the sales of Moon Pies? Just ask the EJ to check out those nights – StoreNext's Electronic Journal can consolidate across any date ranges you like.

- Most stores only retain journal data for 90 days. But Connected Services EJ starts at 13 months, can be extended, and accepts archived data so you get off to a fast – and useful – start.

As with all Connected Services offerings, you can use the StoreNext Electronic Journal from any store, any office – anywhere there's a Web connection. And with Connected Services you get anytime access, so you can finally get home in time for dinner (and check the store later from your laptop). It's just a better way to manage.



StoreNext Retail Technologies LLC  
 1821 Walden Office Square  
 Suite 220  
 Schaumburg, IL 60173  
 800.340.4425  
 www.StoreNext.com

© 2003 StoreNext. All rights reserved. The StoreNext logo is a trademark of Retailix, Inc. All other trademarks or registered trademarks are the property of their respective owners.

# StoreNext Reporting System

Browser-based analysis across periods and stores

*StoreNext ConnectedServices™ cutting-edge technology helps you manage your operation while driving down your costs.*

StoreNext's Connected Services Reporting system opens up your data for sophisticated browser-based analysis whether you are coming from ISS45 V8, V7 or a legacy ScanMaster system. Regardless of the PoS product, all reports are created and provided in a modern GUI format.

The Reporting System is based upon raw data provided automatically from the store. Connected Services sorts the information into a large relational database designed for quick extraction and cross cutting through the use of sophisticated data "cubes."

Reports can encompass any time period, and run across one or any selected group of your stores. And you're the one who decides how many

years of data should be kept for time-series analysis.

Standard reports include Sales by Period or Category, Periodic Sales Comparison, Hourly Productivity, Store Statistics, Revenue by Tender and an Aggregated Business Report.

These reports can be created anytime and saved, and existing formats can be re-used. Drill-down capabilities enable interrogation of data at various levels. StoreNext's reports can be exported to Excel for additional charting, reporting and analysis.

And you don't have to be in the store – anywhere you have an Internet connection, StoreNext's Reporting System is ready anytime you need it.

Product	Total	Q1	Q2	Q3	Q4	YTD
GROCERY	1,044,104.83	2,601,929.16	2,792,312.14	401,234.48	997,086.31	6,802,562.19
MINI TAX GROCERY	451,742.70	164,439.05	161,455.64	117,191.07	102,668.47	547,794.07
MEAT	20,252.79	8,497.97	2,984.63	7,719.26	1,050.94	23,549.87
BAKERY	10,371.43	5,174.52	456.89	2,646.01	1,842.01	10,170.43
ICE	807.54	0.00	0.00	259.22	0.00	807.54
NON-ALCOHOLIC BEVERAGE	1,000,000.00	300,000.00	300,000.00	300,000.00	300,000.00	1,200,000.00
MEAT	750,000.00	190,000.00	190,000.00	190,000.00	190,000.00	760,000.00
PRODUCE	450,000.00	110,000.00	110,000.00	110,000.00	110,000.00	440,000.00
DAIRY	200,000.00	50,000.00	50,000.00	50,000.00	50,000.00	200,000.00
BAKERY	100,000.00	25,000.00	25,000.00	25,000.00	25,000.00	100,000.00
ICE	50,000.00	12,500.00	12,500.00	12,500.00	12,500.00	50,000.00
NON-ALCOHOLIC BEVERAGE	100,000.00	25,000.00	25,000.00	25,000.00	25,000.00	100,000.00
MEAT	50,000.00	12,500.00	12,500.00	12,500.00	12,500.00	50,000.00
PRODUCE	25,000.00	6,250.00	6,250.00	6,250.00	6,250.00	25,000.00
DAIRY	12,500.00	3,125.00	3,125.00	3,125.00	3,125.00	12,500.00
BAKERY	6,250.00	1,562.50	1,562.50	1,562.50	1,562.50	6,250.00
ICE	3,125.00	781.25	781.25	781.25	781.25	3,125.00
NON-ALCOHOLIC BEVERAGE	1,562.50	390.62	390.62	390.62	390.62	1,562.50
MEAT	781.25	195.31	195.31	195.31	195.31	781.25
PRODUCE	390.62	97.66	97.66	97.66	97.66	390.62
DAIRY	195.31	48.80	48.80	48.80	48.80	195.31
BAKERY	97.66	24.41	24.41	24.41	24.41	97.66
ICE	48.80	12.20	12.20	12.20	12.20	48.80
NON-ALCOHOLIC BEVERAGE	24.41	6.10	6.10	6.10	6.10	24.41
MEAT	12.20	3.05	3.05	3.05	3.05	12.20
PRODUCE	6.10	1.52	1.52	1.52	1.52	6.10
DAIRY	3.05	0.76	0.76	0.76	0.76	3.05
BAKERY	1.52	0.38	0.38	0.38	0.38	1.52
ICE	0.76	0.19	0.19	0.19	0.19	0.76
NON-ALCOHOLIC BEVERAGE	0.38	0.09	0.09	0.09	0.09	0.38
MEAT	0.19	0.05	0.05	0.05	0.05	0.19
PRODUCE	0.09	0.02	0.02	0.02	0.02	0.09
DAIRY	0.05	0.01	0.01	0.01	0.01	0.05
BAKERY	0.02	0.00	0.00	0.00	0.00	0.02
ICE	0.01	0.00	0.00	0.00	0.00	0.01
NON-ALCOHOLIC BEVERAGE	0.00	0.00	0.00	0.00	0.00	0.00
MEAT	0.00	0.00	0.00	0.00	0.00	0.00
PRODUCE	0.00	0.00	0.00	0.00	0.00	0.00
DAIRY	0.00	0.00	0.00	0.00	0.00	0.00
BAKERY	0.00	0.00	0.00	0.00	0.00	0.00
ICE	0.00	0.00	0.00	0.00	0.00	0.00
NON-ALCOHOLIC BEVERAGE	0.00	0.00	0.00	0.00	0.00	0.00
MEAT	0.00	0.00	0.00	0.00	0.00	0.00
PRODUCE	0.00	0.00	0.00	0.00	0.00	0.00
DAIRY	0.00	0.00	0.00	0.00	0.00	0.00
BAKERY	0.00	0.00	0.00	0.00	0.00	0.00
ICE	0.00	0.00	0.00	0.00	0.00	0.00
NON-ALCOHOLIC BEVERAGE	0.00	0.00	0.00	0.00	0.00	0.00
MEAT	0.00	0.00	0.00	0.00	0.00	0.00
PRODUCE	0.00	0.00	0.00	0.00	0.00	0.00
DAIRY	0.00	0.00	0.00	0.00	0.00	0.00
BAKERY	0.00	0.00	0.00	0.00	0.00	0.00
ICE	0.00	0.00	0.00	0.00	0.00	0.00
NON-ALCOHOLIC BEVERAGE	0.00	0.00	0.00	0.00	0.00	0.00
MEAT	0.00	0.00	0.00	0.00	0.00	0.00
PRODUCE	0.00	0.00	0.00	0.00	0.00	0.00
DAIRY	0.00	0.00	0.00	0.00	0.00	0.00
BAKERY	0.00	0.00	0.00	0.00	0.00	0.00
ICE	0.00	0.00	0.00	0.00	0.00	0.00
NON-ALCOHOLIC BEVERAGE	0.00	0.00	0.00	0.00	0.00	0.00
MEAT	0.00	0.00	0.00	0.00	0.00	0.00
PRODUCE	0.00	0.00	0.00	0.00	0.00	0.00
DAIRY	0.00	0.00	0.00	0.00	0.00	0.00
BAKERY	0.00	0.00	0.00	0.00	0.00	0.00
ICE	0.00	0.00	0.00	0.00	0.00	0.00
NON-ALCOHOLIC BEVERAGE	0.00	0.00	0.00	0.00	0.00	0.00
MEAT	0.00	0.00	0.00	0.00	0.00	0.00
PRODUCE	0.00	0.00	0.00	0.00	0.00	0.00
DAIRY	0.00	0.00	0.00	0.00	0.00	0.00
BAKERY	0.00	0.00	0.00	0.00	0.00	0.00
ICE	0.00	0.00	0.00	0.00	0.00	0.00
NON-ALCOHOLIC BEVERAGE	0.00	0.00	0.00	0.00	0.00	0.00
MEAT	0.00	0.00	0.00	0.00	0.00	0.00
PRODUCE	0.00	0.00	0.00	0.00	0.00	0.00
DAIRY	0.00	0.00	0.00	0.00	0.00	0.00
BAKERY	0.00	0.00	0.00	0.00	0.00	0.00
ICE	0.00	0.00	0.00	0.00	0.00	0.00
NON-ALCOHOLIC BEVERAGE	0.00	0.00	0.00	0.00	0.00	0.00
MEAT	0.00	0.00	0.00	0.00	0.00	0.00
PRODUCE	0.00	0.00	0.00	0.00	0.00	0.00
DAIRY	0.00	0.00	0.00	0.00	0.00	0.00
BAKERY	0.00	0.00	0.00	0.00	0.00	0.00
ICE	0.00	0.00	0.00	0.00	0.00	0.00
NON-ALCOHOLIC BEVERAGE	0.00	0.00	0.00	0.00	0.00	0.00
MEAT	0.00	0.00	0.00	0.00	0.00	0.00
PRODUCE	0.00	0.00	0.00	0.00	0.00	0.00
DAIRY	0.00	0.00	0.00	0.00	0.00	0.00
BAKERY	0.00	0.00	0.00	0.00	0.00	0.00
ICE	0.00	0.00	0.00	0.00	0.00	0.00
NON-ALCOHOLIC BEVERAGE	0.00	0.00	0.00	0.00	0.00	0.00
MEAT	0.00	0.00	0.00	0.00	0.00	0.00
PRODUCE	0.00	0.00	0.00	0.00	0.00	0.00
DAIRY	0.00	0.00	0.00	0.00	0.00	0.00
BAKERY	0.00	0.00	0.00	0.00	0.00	0.00
ICE	0.00	0.00	0.00	0.00	0.00	0.00
NON-ALCOHOLIC BEVERAGE	0.00	0.00	0.00	0.00	0.00	0.00
MEAT	0.00	0.00	0.00	0.00	0.00	0.00
PRODUCE	0.00	0.00	0.00	0.00	0.00	0.00
DAIRY	0.00	0.00	0.00	0.00	0.00	0.00
BAKERY	0.00	0.00	0.00	0.00	0.00	0.00
ICE	0.00	0.00	0.00	0.00	0.00	0.00
NON-ALCOHOLIC BEVERAGE	0.00	0.00	0.00	0.00	0.00	0.00
MEAT	0.00	0.00	0.00	0.00	0.00	0.00
PRODUCE	0.00	0.00	0.00	0.00	0.00	0.00
DAIRY	0.00	0.00	0.00	0.00	0.00	0.00
BAKERY	0.00	0.00	0.00	0.00	0.00	0.00
ICE	0.00	0.00	0.00	0.00	0.00	0.00
NON-ALCOHOLIC BEVERAGE	0.00	0.00	0.00	0.00	0.00	0.00
MEAT	0.00	0.00	0.00	0.00	0.00	0.00
PRODUCE	0.00	0.00	0.00	0.00	0.00	0.00
DAIRY	0.00	0.00	0.00	0.00	0.00	0.00
BAKERY	0.00	0.00	0.00	0.00	0.00	0.00
ICE	0.00	0.00	0.00	0.00	0.00	0.00
NON-ALCOHOLIC BEVERAGE	0.00	0.00	0.00	0.00	0.00	0.00
MEAT	0.00	0.00	0.00	0.00	0.00	0.00
PRODUCE	0.00	0.00	0.00	0.00	0.00	0.00
DAIRY	0.00	0.00	0.00	0.00	0.00	0.00
BAKERY	0.00	0.00	0.00	0.00	0.00	0.00
ICE	0.00	0.00	0.00	0.00	0.00	0.00
NON-ALCOHOLIC BEVERAGE	0.00	0.00	0.00	0.00	0.00	0.00
MEAT	0.00	0.00	0.00	0.00	0.00	0.00
PRODUCE	0.00	0.00	0.00	0.00	0.00	0.00
DAIRY	0.00	0.00	0.00	0.00	0.00	0.00
BAKERY	0.00	0.00	0.00	0.00	0.00	0.00
ICE	0.00	0.00	0.00	0.00	0.00	0.00
NON-ALCOHOLIC BEVERAGE	0.00	0.00	0.00	0.00	0.00	0.00
MEAT	0.00	0.00	0.00	0.00	0.00	0.00
PRODUCE	0.00	0.00	0.00	0.00	0.00	0.00
DAIRY	0.00	0.00	0.00	0.00	0.00	0.00
BAKERY	0.00	0.00	0.00	0.00	0.00	0.00
ICE	0.00	0.00	0.00	0.00	0.00	0.00
NON-ALCOHOLIC BEVERAGE	0.00	0.00	0.00	0.00	0.00	0.00
MEAT	0.00	0.00	0.00	0.00	0.00	0.00
PRODUCE	0.00	0.00	0.00	0.00	0.00	0.00
DAIRY	0.00	0.00	0.00	0.00	0.00	0.00
BAKERY	0.00	0.00	0.00	0.00	0.00	0.00
ICE	0.00	0.00	0.00	0.00	0.00	0.00
NON-ALCOHOLIC BEVERAGE	0.00	0.00	0.00	0.00	0.00	0.00
MEAT	0.00	0.00	0.00	0.00	0.00	0.00
PRODUCE	0.00	0.00	0.00	0.00	0.00	0.00
DAIRY	0.00	0.00	0.00	0.00	0.00	0.00
BAKERY	0.00	0.00	0.00	0.00	0.00	0.00
ICE	0.00	0.00	0.00	0.00	0.00	0.00
NON-ALCOHOLIC BEVERAGE	0.00	0.00	0			

# StoreNext Sales Analysis

Know your sales and profitability metrics down to item level

*If you know more about what's moving (out), you can make better decisions, and that always means moving profits (up)*

StoreNext's Connected Services Reporting System has been providing the key department and group reports you need to understand the fundamental structure of your business and profitability.

It's time to go to the next level.

StoreNext' new Sales Analysis application works as an extension to the Connected Services Reporting System and takes that information all the way down to item level (ISS45 only). Sales Analysis not only extends the existing reporting system reports, but also adds new features.

- Sales analysis was designed to make it simple for Reporting System users to work with simultaneously with Sales Analysis using the same user interface. With truly seamless integration, queries for the Reporting System now

drill down to PLU level instead of stopping at the Group or Department.

- Sales Analysis provides the new Sales Count Activity report – here, the user can select how many lines of PLU results to report (as best or worst) based on quantity sold, highest gross profit, cost, dollars and other selectable criteria.
- Users can now configure and save display settings and queries more easily than in the past.
- Sales Analysis can retain an item cost per day across the chain – this means that gross profit analysis will be much more accurate than simply using a flat current cost.
- Sales Analysis is able to use ISS45's native PLU cost data. If RBO is present it can even use RBO's sophisticated item-level costing for further LIFO/ FIFO etc. accuracy.

StoreNext Retail Technologies LLC  
1821 Walden Office Square  
Suite 220  
Schaumburg, IL 60173  
800.340.4425  
www.StoreNext.com

Product (Name / Code)	Total	101	102	103	104	105
ISS45	5,821,828.39	2,815,579.86	889,215.05	1,138,536.84	997,046.75	914,476.89
ISS45	2,888,248.83	1,378,716.15	379,032.81	492,504.45	430,681.37	398,328.10
ISS45	3,249,459.03	1,547,423.79	222,884.47	274,334.29	232,865.56	210,889.89
ISS45	451,742.79	114,479.05	51,675.84	112,295.87	115,694.47	49,787.69
ISS45	30,376.79	8,477.87	3,908.45	7,378.00	4,670.84	5,822.39
ISS45	11,375.43	5,276.62	1,406.89	2,686.92	1,681.00	2,279.09
ISS45	407.74	0.00	0.00	255.07	0.00	152.67
ISS45	6.84	0.00	1.41	0.00	0.00	5.43
ISS45	812,829.89	349,140.84	116,583.81	179,797.15	159,312.79	46,811.04
ISS45	792,275.38	379,480.79	116,561.40	179,688.06	152,268.19	46,788.03
ISS45	99,020.18	44,144.07	88,995.18	128,112.19	112,225.17	70,000.00
ISS45	421,474.15	139,101.12	43,695.17	73,084.46	74,749.15	73,184.41
ISS45	418,831.97	137,828.24	42,992.17	72,808.38	74,218.85	72,808.38
ISS45	219,000.12	71,240.91	17,436.45	37,228.47	25,521.05	41,776.74
ISS45	209,996.86	61,801.82	36,487.70	43,001.71	31,801.86	31,801.86
ISS45	189,444.74	61,761.46	40,494.44	38,928.69	18,414.24	39,945.81
ISS45	184,444.74	48,444.87	40,494.44	38,928.69	18,414.24	39,945.81
ISS45	1,592.73	1,521.49	73.63	2,492.41	481.13	895.87
ISS45	1,498.25	1,427.49	0.00	0.00	28.80	0.00
ISS45	113,976.55	41,214.62	17,503.79	23,207.45	14,249.12	35,111.09
ISS45	62,412.43	35,582.27	5,242.77	6,294.30	6,829.89	7,283.24
ISS45	51,481.17	11,213.12	5,976.63	4,239.89	6,279.80	6,279.80
ISS45	13,543.23	7,240.30	21,683.25	1,499.27	0.00	1,140.00
ISS45	15,800.43	0.00	15,800.43	0.00	0.00	0.00
ISS45	1,599.63	0.00	0.00	0.00	0.00	1,599.63
ISS45	1,445.83	607.89	214.18	348.31	348.31	0.00
ISS45	626.45	303.03	174.88	0.00	0.00	148.57
ISS45	4,738.15	4,676.57	1,407.16	1,089.46	0.00	1,037.12
ISS45	406.98	0.00	406.98	0.00	0.00	0.00
ISS45	28,794.57	7,610.38	1,094.16	3,368.45	1,816.58	6,799.63
ISS45	448.07	0.00	0.00	447.60	0.00	0.00
ISS45	166.15	0.79	0.00	0.00	0.00	165.36
ISS45	448.07	0.00	0.00	447.60	0.00	0.00
ISS45	-3,443.33	-30.10	-499.10	0.00	0.00	-3,443.77
ISS45	-26,206.13	-10,907.98	-3,895.44	0.00	-4,439.75	-5,262.92